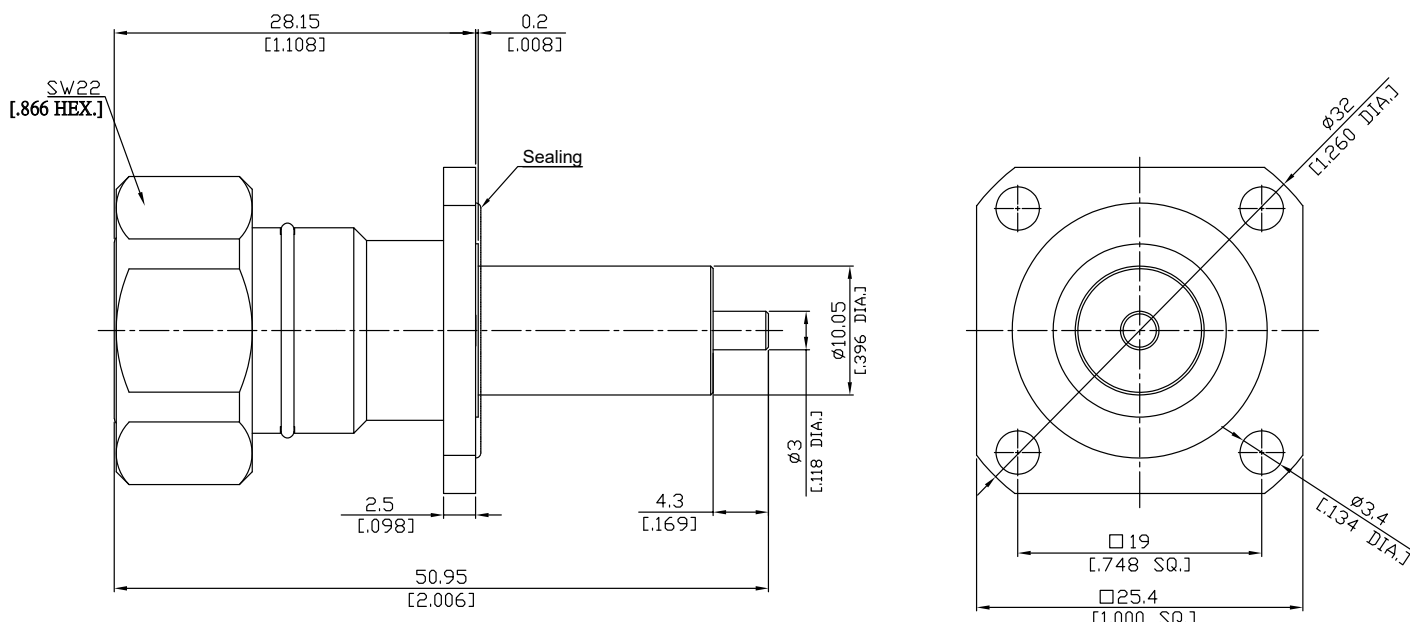


4.3-10 plug (male) Connector 4 Panel Receptacle Mount
Stub Terminal, 19mm (.748 inch) Hole Spacing DC- 6 GHz VSWR1.20

43101GFA50-5095A / 144



All dimensions are in mm [inch]

Tolerances according to DIN ISO 2768-mH

Interface

According to

IEC 61169-54

Electrical Data

Impedance

50 Ω

Frequency

DC to 6 GHz

VSWR (Return Loss)

≤ 1.20 (≥ 20.83 dB)

Insertion Loss

≤ 0.1 × √F (GHz) dB

Insulation Resistance

≥ 5 GΩ

Center contact resistance

≤ 1.0 mΩ

Outer contact resistance

≤ 1.0 mΩ

Test voltage

2500 V rms

Working voltage

500 V rms

RF-leakage

≥ 110 dB @ DC to 6 GHz for tool tightened plugs

≥ 70 dB @ 3 to 6 GHz for tool-less plugs

Power handling

500 W @ 2.0 GHz

Material And Plating

Piece Parts	Material	Plating
Centre contact	Brass	Gold plating, 3 pinch (Non-magnetic nickel-phosphorus underplating, 80 pinch)
Body	Brass	Copper-Tin-Zinc Alloy
Insulator	PTFE	
Coupling nut	Brass	Copper-Tin-Zinc Alloy
Gasket	Silicon Rubber	

4.3-10 plug (male) Connector 4 Panel Receptacle Mount
Stub Terminal, 19mm (.748 inch) Hole Spacing DC- 6 GHz VSWR1.20

43101GFA50-5095A / 144

Mechanical Data

Coupling mechanisms	Screw-lock
Mating Cycles	≥ 500
Terminal Type	Stub
Captivated Type	Mechanical Captivation
Recommended torque	5 Nm

Environmental Data

Temperature Range	-65°C to +165°C
Thermal shock	IEC 61169-1 9.4.4
Corrosion	ISO 21207 method B
Vibration	IEC 61169-1 9.3.3 and IEC 60068-2-64
Shock	IEC 61169-1 9.3.14
Moisture Resistance	IEC 60529, IP68 1.5 h / 1 m
RoHS	compliant

Packing

Single or 100